

8000 Series TTL—Including Tri-State

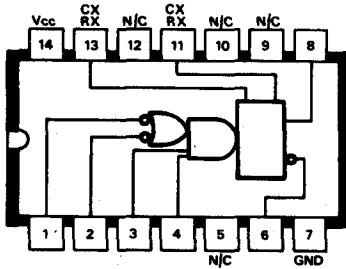
REFERENCE TABLE *See outline drawings Nos. 109, 111, 114 and 112 (as applicable for 14 pin, 16 pin package etc.) for physical dimensions.*

Code	Function	Stock No.	Connection Diagram No.
DM8574D	TRI-STATE 1024-Bit Programmable ROM (pROM)	33040C	C36
DM8575N	Programmable Logic Array (Active)	33041C	C37
DM8576N	Programmable Logic Array (Passive)	33042A	C38
DM8595N	4096-Bit (512 x 8) ROM	3345F	C43
DM8596N	TRI-STATE 4096-Bit (512 x 8) ROM	33046D	C44
DM8597N	TRI-STATE 1024-Bit ROM TRI-STATE DM74187	31039C	C45
DM8598N	TRI-STATE 256-Bit ROM TRI-STATE DM7488	31039A	C46
DM8599N	TRI-STATE 84-Bit RAM TRI-STATE DM7489	31040D	C47
DM8601N	Monostable Multivibrator (Re-triggerable)	30808E	C48
DM8613N	Quad Gated D Flip-Flop	34458C	C50
DM8800H	Dual TTL/MOS Translator	19627G	C51
DM8803N	Oscillator/Clock Driver	33048X	C52
DM8804N	Quad TTL/MOS Driver	33049R	C53
DM8805N	Dual TTL/MOS Driver (SN75361)	33050A	C54
DM8806N	MOS/TTL Converter	33051X	C55
DM8810N	Quad 2-Input TTL/MOS Interface Gate	19628E	C56
DM8811N	Quad 2-Input TTL/MOS Interface Gate	19829C	C57
DM8812N	14V Hex Inverter (Open Collector)	29647X	C58
DM8819N	Quad 2-Input TTL/MOS Interface and Gate	31044G	C59
DM8875AN	TRI-STATE 4-Bit Multiplier (most sig. 4-bits)	33053F	C62
DM8875BN	TRI-STATE 4-Bit Multiplier (least sig. 4-bits)	33272F	C63
DM8880N	High Voltage 7-Segment Decoder/Driver	31047A	C64
DM8884N	Panaplex Driver	33054D	C65
DM8885N	MOS to Sperry Display Driver	33055B	C66

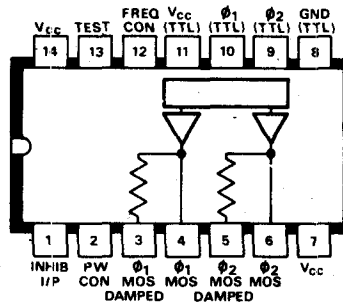


PLEASE QUOTE STOCK NO. AND MANUFACTURER'S CODE WHEN ORDERING

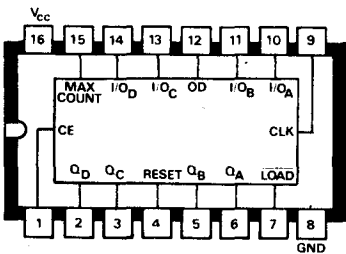
C48 **DM8601N**
Monostable multivibrator



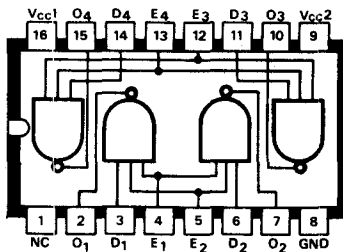
C52 **DM8803N**
MOS Oscillator/clock driver



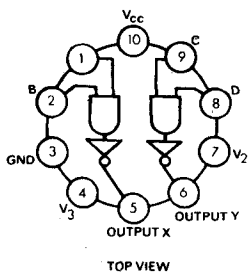
C50 **DM8613N**
Quad gated D Flip Flop



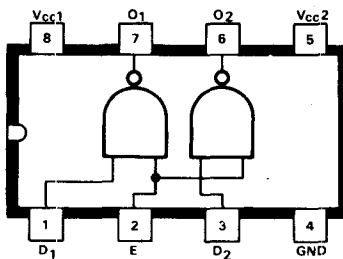
C53 **DM8804N**
Quad MOS memory driver



C51 **DM8800H**
Dual Voltage Translator



C54 **DM8805N**
Dual MOS memory driver



7